

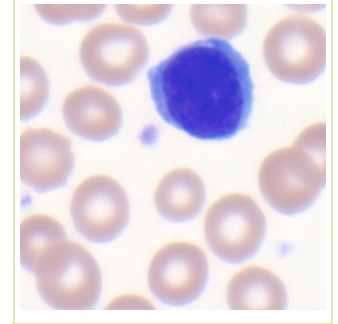
WBC Types

We learned in class today that there are four distinct types of white blood cells: Neutrophil (pronounced "NEW-troh-fill"), Eosinophil (pronounced "ee-oh-SIN-oh-fill"), Monocyte (pronounced "MAW-no-site"), and Lymphocyte (pronounced "LIM-foh-site").

Name:
Period:
Mr. Z.'s Science Class
9/22/08

The information that we learned about these types of cells will form the "building blocks" which we will be playing with over the next week as we learn to understand various functions of the immune system. This homework will help make sure you know the basic information about these cells that you will need.

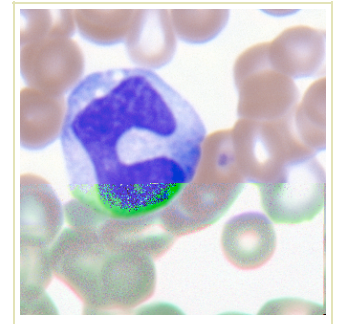
1. a) What type of white blood cell is shown in this picture?



b) Do these white blood cells kill germs?

c) How can a doctor quickly tell if these cells are active in a person's body?

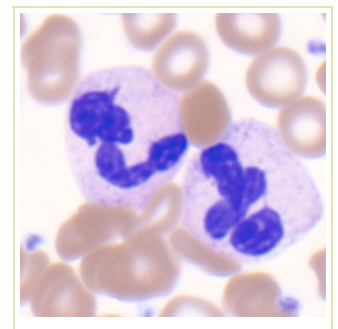
2. a) What type of white blood cell is shown in this picture?



b) Do these white blood cells kill germs?

c) What are those hollow bubbles you can see in the cell?

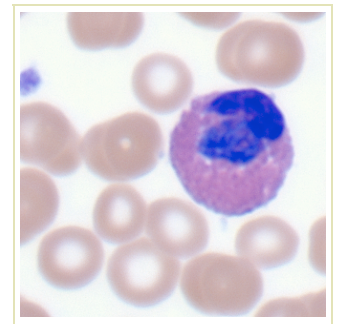
3. a) What type of white blood cell is shown in this picture?



b) These cells move around very quickly. Why do they have to be so fast?

c) What is in the tiny grains you can see in the cell?

4. a) What type of white blood cell is shown in this picture?



b) Why are these cells sometimes dangerous to you?

c) What do these cells hunt?